

COUNCIL MONTHLY ACTIVITY REPORTING

Dates Received Tracking
2010 - 2011

		M A M J J A S O N D J F															
D 1	1247	T	T	T												25%	
	4280	T	T	T												25%	
	4704															0%	
	9278	T														8%	
	10313	T	T	T												25%	16.67%

		M A M J J A S O N D J F															
D 2	5914	T	T													17%	
	8896	T	T	T												25%	
	9859	T														8%	
	10418	T	T	T												25%	
	13214	T	T	T												25%	20.00%

		M A M J J A S O N D J F															
D 3	5949	T	T	T												25%	
	10401	T	T													17%	
	10797	T	T	T												25%	
	11307	T	T	T												25%	
	12415	T	T	T												25%	23.33%

		M A M J J A S O N D J F															
D 4	1247	T	T	T												25%	
	4280	T	T	T												25%	
	4704															0%	
	9278	T														8%	
	10313	T	T	T												25%	16.67%

		M A M J J A S O N D J F															
D 5	2071	T	T													17%	
	2513															0%	
	2994	T														8%	
	3360	T	T	T												25%	
	3878															0%	10.00%

		M A M J J A S O N D J F															
D 6	2725															0%	
	3031															0%	
	3142															0%	
	5393															0%	
	8962															0%	0.00%

		M A M J J A S O N D J F															
D 7	4848															0%	
	5735															0%	
	6330															0%	
	7139															0%	
	8991															0%	0.00%

		M A M J J A S O N D J F															
D 8	1534	T	T	T												25%	
	2430															0%	
	9760	T	T	T												25%	
	10213															0%	12.50%

		M A M J J A S O N D J F															
D 9	3165	T	T	T												25%	
	1731															0%	
	4850															0%	
	5248															0%	
	10317															0%	6.25%

		M A M J J A S O N D J F															
D 10	5249															0%	
	5408	T	T													17%	
	5858															0%	
	6182															0%	
	6362															0%	3.33%

		M A M J J A S O N D J F															
D 11	2031	L	T	T												25%	
	5182	T														8%	
	5201															0%	
	5320															0%	
	5965															0%	6.67%

		M A M J J A S O N D J F															
D 12	1886															0%	
	5411															0%	
	5850															0%	
	6395	T	T													17%	
	8752															0%	3.33%

		M A M J J A S O N D J F															
D 13	4899															0%	
	5238	C	T													17%	
	6331															0%	5.56%

		M A M J J A S O N D J F															
D 14	3920	T	T													17%	
	5474	L														8%	
	6588															0%	
	6684															0%	
	7150															0%	5.00%

		M A M J J A S O N D J F															
D 15	2094	T	T													17%	
	5626															0%	
	5694															0%	
	5878	T	T	T												25%	
	7336															0%	8.33%

		M A M J J A S O N D J F															
D 16	3456															0%	
	5353															0%	
	9761															0%	
	10856															0%	0.00%

T	received on Time
L	received Late
C	Combined report

COUNCIL MONTHLY ACTIVITY REPORTING

Dates Received Tracking
2010 - 2011

		M A M J J A S O N D J F															
D 17	1519	T	T	T												25%	
	5543															0%	
	8547	T	T	T												25%	
	8655	T	T	T												25%	
	9949	T	T	T												25%	20.00%

		M A M J J A S O N D J F															
D 18	5219															0%	
	5788															0%	
	9757															0%	
	10330															0%	0.00%

		M A M J J A S O N D J F															
D 19	5256	T	T													17%	
	5259															0%	
	5479															0%	5.56%

		M A M J J A S O N D J F															
D 20	3183															0%	
	5976															0%	
	6755	T	T	T												25%	
	7497															0%	6.25%

		M A M J J A S O N D J F															
D 21	5861	T	T													17%	
	6132															0%	
	7138	T	T													17%	
	10316															0%	8.33%

		M A M J J A S O N D J F															
D 22	3559																
	3802																
	6381																
	7564																
10265															0%	0.00%	

		M A M J J A S O N D J F															
D 23	3575															0%	
	5549															0%	
	5707	T	T													17%	
	6169															0%	
	9647	T	T													17%	6.67%

		M A M J J A S O N D J F															
D 24	5117															0%	
	5859															0%	
	6068															0%	
	6529															0%	0.00%

		M A M J J A S O N D J F															
D 25	5384															0%	
	8301	T	T													17%	
	8638															0%	
	9690	T	T	T												25%	
	12156															0%	
	12740	T	T	T												25%	11.11%

		M A M J J A S O N D J F															
D 26	5104	T	T	T												25%	
	9539	T	T	T												25%	
	9848	T	T													17%	
	11888															0%	
	13129	T	T	T												25%	18.33%

		M A M J J A S O N D J F															
D 27	1517	T	T	T												25%	
	4938															0%	
	8279	T	C	T												25%	
	9538	T	T	T												25%	
	11936															0%	15.00%

		M A M J J A S O N D J F															
D 28	5557	T	T	T												25%	
	6261															0%	
	6493															0%	
	8338															0%	6.25%

		M A M J J A S O N D J F															
D 29	5970															0%	
	6594		T													8%	
	7436															0%	
	8239															0%	
	9713															0%	1.67%

		M A M J J A S O N D J F															
D 30	5838															0%	
	5946															0%	
	6044															0%	
	10174															0%	0.00%

		M A M J J A S O N D J F															
D 31	10029	T	T	T	T											33%	
	10239															0%	
	12943															0%	11.11%

		M A M J J A S O N D J F															
D 32	3177															0%	
	5968															0%	
	7140															0%	
	7315															0%	0.00%

		M A M J J A S O N D J F															
D 33	8215	T														8%	
	8905	T	T	T												25%	
	10580															0%	
	10587															0%	
	11429	T														8%	
	11775	T	T	T												25%	11.11%

T	received on Time
L	received Late
C	Combined report

Monthly Evaluation: Program Reports: Saskatchewan State

District				Councils in District				Quantity Received			
District	Councils in District	%	Quantity Received	District	Councils in District	%	Quantity Received				
D 1	5	17%	10	D 18	4	0%	0				
D 2	5	20%	12	D 19	3	6%	2				
D 3	5	23%	14	D 20	4	6%	3				
D 4	Inactive			D 21	4	8%	4				
D 5	5	10%	6	D 22	5	0%	0				
D 6	5	0%	0	D 23	5	7%	4				
D 7	5	0%	0	D 24	4	0%	0				
D 8	4	13%	6	D 25	6	11%	8				
D 9	5	6%	3	D 26	5	18%	11				
D 10	5	3%	2	D 27	5	15%	9				
D 11	5	7%	4	D 28	4	6%	3				
D 12	5	3%	2	D 29	5	2%	1				
D 13	3	6%	2	D 30	4	0%	0				
D 14	5	5%	3	D 31	3	11%	4				
D 15	5	8%	5	D 32	4	0%	0				
D 16	4	0%	0	D 33	6	11%	8				
D 17	5	20%	12								

%	Quan
0%	8
1% to 10%	14
11% to 20%	9
21% to 30%	1
31% to 40%	0
41% to 50%	0
51% to 60%	0
61% to 70%	0
71% to 80%	0
81% to 90%	0
91% to 100%	0

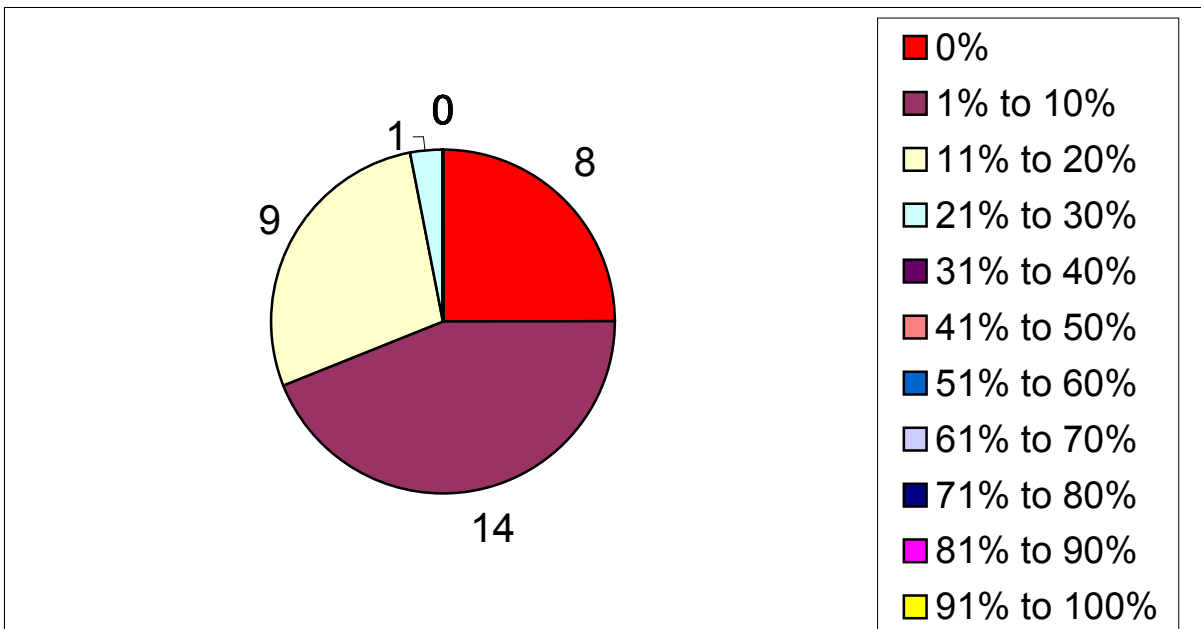
Total Districts 32

State percentage reported year to date:

7%

Baseline, Year to date:

0%



		M	A	M	J	J	A	S	O	N	D	J	F		
3 Councils	Council 1													0%	0%
	Council 2													0%	
	Council 3													0%	

		M	A	M	J	J	A	S	O	N	D	J	F		
4 Councils	Council 1													0%	0%
	Council 2													0%	
	Council 3													0%	
	Council 4													0%	

		M	A	M	J	J	A	S	O	N	D	J	F		
5 Councils	Council 1													0%	0%
	Council 2													0%	
	Council 3													0%	
	Council 4													0%	
	Council 5													0%	

		M	A	M	J	J	A	S	O	N	D	J	F		
6 Councils	Council 1													0%	0%
	Council 2													0%	
	Council 3													0%	
	Council 4													0%	
	Council 5													0%	
	Council 6													0%	

3	4	5	6	D1	5
0%	0%	0%	0%	D2	5
				D3	5
				D4	
				D5	5
				D6	5
				D7	5
				D8	4
				D9	5
				D10	5
				D11	5
				D12	5
				D13	3
				D14	5
				D15	5
				D16	4
				D17	5
				D18	4
				D19	3
				D20	4
				D21	4
				D22	5
				D23	5
				D24	4
				D25	6
				D26	5
				D27	5
				D28	4
				D29	5
				D30	4
				D31	3
				D32	4
				D33	6

Reports quantity by districts by Councils

Reports received	138	of	1764														
D 1	1247	3	D 8	1534	3	D 15	2094	2	D 22	3559	0	D 28	5557	3	D 29	5970	0
	4280	3		2430	0		5626	0		3802	0		6261	0		6594	1
	4704	0		9760	3		5694	0		6381	0		6493	0		7436	0
	9278	1		10213	0		5878	3		7564	0		8338	0		8239	0
	10313	3		48	7336		0	60		10265	0		60	9713		0	60
D 2	5914	2	D 9	3165	3	D 16	3456	0	D 23	0		D 30	5838	0	D 31	10029	4
	8896	3		1731	0		5353	0		3575	0		6594	1		10239	0
	9859	1		4850	0		9761	0		5549	0		7436	0		12943	0
	10418	3		5248	0		10856	0		5707	2		8239	0			
	13214	3		60	10317		0	48		6169	0		9713	0		60	
D 3	5949	3	D 10	5249	0	D 17	1519	3	D 24	5117	0	D 32	3177	0	D 33	8215	1
	10401	2		5408	2		5543	0		5859	0		5968	0		8905	3
	10797	3		5858	0		8547	3		6068	0		7140	0		10580	0
	11307	3		6182	0		8655	3		6529	0		8338	0		10587	0
	12415	3		60	6362		0	60		9949	3		48	10174		0	48
D 4			D 11	2031	3	D 18	5219	0	D 25	5384	0	D 32	3177	0	D 33	8215	1
				5182	1		5788	0		8301	2		5968	0		8905	3
				5201	0		9757	0		8638	0		7140	0		10580	0
				5320	0		10330	0		9690	3		7315	0		10587	0
				0	5965		0	48		12156	0		48	11775		3	72
D 5	2071	2	D 12	1886	0	D 19	5256	2	D 26	5104	3	D 32	3177	0	D 33	8215	1
	2513	0		5411	0		5259	0		9539	3		5968	0		8905	3
	2994	1		5850	0		5479	0		9848	2		7140	0		10580	0
	3360	3		6395	2		3183	0		11888	0		8338	0		10587	0
	3878	0		60	8752		0	36		13129	3		60	11429		1	48
D 6	2725	0	D 13	4899	0	D 20	3183	0	D 27	1517	3	D 32	3177	0	D 33	8215	1
	3031	0		5238	2		5976	0		4938	0		5968	0		8905	3
	3142	0		6331	0		6755	3		8279	3		7140	0		10580	0
	5393	0		36	7497		0	48		9538	3		8338	0		10587	0
	8962	0		60						11936	0		60	11775		3	72
D 7	4848	0	D 14	3920	2	D 21	5861	2	D 27	1517	3	D 32	3177	0	D 33	8215	1
	5735	0		5474	1		6132	0		4938	0		5968	0		8905	3
	6330	0		6588	0		7138	2		8279	3		7140	0		10580	0
	7139	0		6684	0		10316	0		9538	3		8338	0		10587	0
	8991	0		60	7150		0	48		11936	0		60	11775		3	72
		42			22			26			32			16			
						Total		138									

Received to date

Total # of reports