

COUNCIL MONTHLY ACTIVITY REPORTING

Dates Received Tracking
2010 - 2011

		M A M J J A S O N D J F													
D 1	1247	T	T	T	L	T	T	T	T	T	T	T	T	100%	61.67%
	4280	T	T	T	T	T	T	T	T	T	T	T	T	100%	
	4704													0%	
	9278	T												8%	
	10313	T	T	T	T	T	T	T	T	T	T	T	T	100%	

		M A M J J A S O N D J F													
D 2	5914	T	T	C	T	T	T	T	T	T	L	T	T	100%	100.00%
	8896	T	T	T	L	L	L	L	T	T	T	L		100%	
	9859	T	T	T	C	L	T	T	T	T	T	T	T	100%	
	10418	T	T	T	T	T	T	T	T	T	T	L		100%	
	13214	T	T	T	T	L	T	L	T	L	L	L	L	100%	

		M A M J J A S O N D J F													
D 3	5949	T	T	T	C	T	T	T	T	T	T	T	T	100%	100.00%
	10401	T	T	L	T	T	T	T	T	T	T	T	T	100%	
	10797	T	T	L	L	T	T	T	T	T	T	T	T	100%	
	11307	T	T	L	T	L	T	T	T	T	T	T	T	100%	
	12415	T	T	T	T	T	T	L	L	T	T	T	T	100%	

		M A M J J A S O N D J F													
D 4														0%	0.00%
														0%	
														0%	
														0%	
														0%	

		M A M J J A S O N D J F													
D 5	2071	T	T	T	T	C	C	T	T	T	T	T	T	100%	80.00%
	2513													0%	
	2994	T	L	L	L	L	L	L	L	L	L	T		100%	
	3360	T	T	T	L	T	L	T	T	T	T	T	T	100%	
	3878	L	L	L	L	L	L	L	L	L	L	L	T	100%	

		M A M J J A S O N D J F													
D 6	2725	C	C	C	C	C	C	C	C	C	C	C	T	100%	40.00%
	3031													0%	
	3142													0%	
	5393													0%	
	8962	C	C	C	C	C	C	C	C	C	C	C	T	100%	

		M A M J J A S O N D J F													
D 7	4848													0%	13.33%
	5735													0%	
	6330													0%	
	7139													0%	
	8991	C	C	C	C	C	C	C	L					67%	

		M A M J J A S O N D J F													
D 8	1534	T	T	T	T	T	T	T	T	T	T	T	T	100%	75.00%
	2430	C	C	C	C	C	C	C	C	C	C	L		100%	
	9760	T	T	T	T	T	T	T	T	T	T	T	T	100%	
	10213													0%	

		M A M J J A S O N D J F													
D 9	3165	T	T	T	T	T	T	T	T	T	T	T	T	100%	25.00%
	1731													0%	
	4850													0%	
	5248													0%	
	10317													0%	

		M A M J J A S O N D J F													
D 10	5249													0%	28.33%
	5408	T	T						T	T	T		42%		
	5858													0%	
	6182	C	C	C	C	C	C	C	C	C	C	C	T	100%	
	6362													0%	

		M A M J J A S O N D J F													
D 11	2031	L	T	T	L	L	L	L	L	L	T	L	T	100%	100.00%
	5182	T	T	T	T	T	L	L	T	T	T	T	T	100%	
	5201	C	C	C	C	C	C	C	C	C	C	L		100%	
	5320	L	L	L	L	L	L	L	L	T	L	T	L	100%	
	5965	C	C	C	C	C	C	C	C	C	C	C	T	100%	

		M A M J J A S O N D J F													
D 12	1886	L	L	L	L	L	L	L	L	L	L	T	T	100%	100.00%
	5411	C	C	C	C	C	C	C	C	C	C	T		100%	
	5850	C	C	C	C	C	C	C	C	C	C	L		100%	
	6395	T	T	T	L	T	T	T	T	T	T	T	T	100%	
	8752	L	L	L	L	L	L	L	L	L	T	L	T	100%	

		M A M J J A S O N D J F													
D 13	4899	C	C	C	C	C	C	C	C	C	C	C	T	100%	55.56%
	5238	C	T	C	T	C	C	L						67%	
	6331													0%	

		M A M J J A S O N D J F													
D 14	3920	T	T	T	T	T	T	T	T	T	T	T	T	100%	100.00%
	5474	L	L	L	L	L	L	T	L	L	T	L	T	100%	
	6588	C	C	C	C	C	C	C	C	L	L	T		100%	
	6684	L	L	L	L	L	T	T	T	T	T	T	T	100%	
	7150	C	C	C	C	L	C	C	C	C	C	T		100%	

		M A M J J A S O N D J F													
D 15	2094	T	T	T	L	T	T	T	T	T	T	T	T	100%	60.00%
	5626	L	L	L	L	L	L	L	L	L	T	T		100%	
	5694													0%	
	5878	T	T	T	T	T	T	T	T	T	T	T	T	100%	
	7336													0%	

		M A M J J A S O N D J F													
D 16	3456													0%	25.00%
	5353	C	C	C	C	C	C	L	L	L	T	T	100%		
	9761													0%	
	10856													0%	

T	received on Time
L	received Late
C	Combined report

COUNCIL MONTHLY ACTIVITY REPORTING

Dates Received Tracking
2010 - 2011

		M A M J J A S O N D J F													
D 17	1519	T	T	T	T	T	T	T	T	T	T	T	T	100%	
	5543	C	L	C	L	C	L	T	T	T	T	T	T	100%	
	8547	T	T	T	T	T	T	T	T	T	T	T	T	100%	
	8655	T	T	T	T	T	T	T	T	T	T	T	T	100%	
	9949	T	T	T	T	T	T	T	T	T	T	T	T	100%	100.00%

		M A M J J A S O N D J F													
D 18	5219													0%	
	5788													0%	
	9757													0%	0.00%

		M A M J J A S O N D J F													
D 19	5256	L	T	T	C	C	C	C	T	C	C	L		100%	
	5259	L	L	L	L	L	L	T	T	T	T	T		100%	
	5479	C	C	C	C	C	C	L	T	T	C	L		100%	100.00%

		M A M J J A S O N D J F													
D 20	3183	C	C	C	T	L	L	L	L	L	L	T	T	100%	
	5976													0%	
	6755	T	T	T				T	T	T	T	T		75%	
	7497	C	C	C	C	C	C	C	C	C	C	C	L	100%	68.75%

		M A M J J A S O N D J F													
D 21	5861	T	T	T	T	T	T	T	T	T	L	L		100%	
	6132	C	C	C	C	C	C	C	C	C	C	C	L	100%	
	7138	T	T	L	T	L	T	L	T	L	T			100%	
	10316	C	C	C	C	C	C	C	C	C	C	C	T	100%	100.00%

		M A M J J A S O N D J F													
D 22	3559	C	C	C	C	C	C	C	C	C	C	C	T		
	3802														
	6381	C	C	C	C	C	C	C	C	C	C	C	T		
	7564	C	C	C	C	C	C	C	C	C	C	C	L		
	10265													0%	60.00%

		M A M J J A S O N D J F													
D 23	3575					L	L	L	L	T	T			50%	
	5549													0%	
	5707	T	T	T	T	T	T	T	T	T	L	T		100%	
	6169	L	L	L	T	L	T	L	T	L	T	T		100%	
	9647	T	T	L	L	C	L	L	L	L	C	T		100%	70.00%

		M A M J J A S O N D J F													
D 24	5117	C	C	C	C	C	C	C	C	C	C	C	T	100%	
	5859	C	C	C	C	C	C	C	C	C	C	C	L	100%	
	6068	C	C	T	L	L	L	L	T	T	L	T	L	100%	
	6529	C	C	C	C	C	C	C	C	C	C	C	L	100%	100.00%

		M A M J J A S O N D J F													
D 25	5384	T	L	L	L	L	L	L	L	L	L			83%	
	8301	T	T											17%	
	8638	C	C	C	C	C	C	C	C	C	C	C	T	100%	
	9690	T	T	T	T	L	L	L	T	T	T	L		100%	
	12156	L	L	L	L	L	L	L	L	L	T	T		100%	
	12740	T	T	T	L	T	L	L	L	L	L	T	T	100%	83.33%

		M A M J J A S O N D J F													
D 26	5104	T	T	T	L	L	L	T	T	T	T	T	T	100%	
	9539	T	T	T	T	T	T	T	T	T	T	T	T	100%	
	9848	T	T	T	T	T	T	T	T	T	T	T	T	100%	
	11888	L	L	L	T	T	T	T	L	L	T	T	T	100%	
	13129	T	T	T	T	T	T	T	T	T	T	T	T	100%	100.00%

		M A M J J A S O N D J F													
D 27	1517	T	T	T	L	L	L	T	L	L	T	T	L	100%	
	4938	L	L	L	L	L	L	L	L	L	L			83%	
	8279	T	C	T										25%	
	9538	T	T	T	L	L	L	T	T	T	T	T		100%	
	11936													0%	61.67%

		M A M J J A S O N D J F													
D 28	5557	T	T	T	L	L	T	L	L	L	L	L	T	100%	
	6261	C	C	C	C	C	C	C	C	C	C	C	T	100%	
	6493	C	C	C	C	C	C	C	C	C	C	C	T	100%	
	8338	L	L	L	L	C	C	C	C	C	C	C	L	100%	100.00%

		M A M J J A S O N D J F													
D 29	5970	L	L	L	L	L	L	L	L	L	L	T	T	100%	
	6594	T	T	T	C	C	L	C	C	C	L			83%	
	7436	L	L	L	L	L	L	L	T	T	T	T		100%	
	8239	C	C	C	C	C	C	C	C	C	C	C	L	100%	
	9713	C	C	C	C	C	C	C	C	C	C	C	T	100%	96.67%

		M A M J J A S O N D J F													
D 30	5838													0%	
	5946													0%	
	6044	C	C	C	C	C	C	C	C	C	C	C	T	100%	
	10174	C	C	C	C	C	C	C	C	C	C	C	L	100%	50.00%

		M A M J J A S O N D J F													
D 31	10029	T	T	T	T	C	C	C	C	C	C	L	L	100%	
	10239													0%	
	12943	C	C	C	C	C	C	C	C	C	L	T	T	100%	66.67%

		M A M J J A S O N D J F													
D 32	3177	L	L	L	L	L	L	L	L	L	L	T	L	100%	
	5968	C	C	C	C	C	C	C	C	C	C	C	T	100%	
	7140													0%	
	7315	L	L	L	L	L	L	L	L	L	L	L	T	100%	75.00%

		M A M J J A S O N D J F													
D 33	8215	T	C	C	C	C	C	C	C	C	C	C	T	100%	
	8905	T	T	T	L	T	T	T	T	T	T			100%	
	10580													0%	
	10587	C	C	C	C	C	C	C	C	C	C	C	L	100%	
	11429	T												8%	
11775	T	T	T	T	C	T	L	T	T	T	L	L	100%	68.06%	

T	received on Time
L	received Late
C	Combined report

To Feb Mar. 22
To Sept. 28/10

Monthly Evaluation: Program Reports: Saskatchewan State

District	Councils in District	%	Quantity Received	District	Councils in District	%	Quantity Received
D 1	5	62%	37	D 18	3	0%	0
D 2	5	100%	60	D 19	3	100%	36
D 3	5	100%	60	D 20	4	69%	33
D 4	Inactive			D 21	4	100%	48
D 5	5	80%	48	D 22	5	60%	36
D 6	5	40%	24	D 23	5	70%	42
D 7	5	13%	8	D 24	4	100%	48
D 8	4	75%	36	D 25	6	83%	60
D 9	5	25%	12	D 26	5	100%	60
D 10	5	28%	17	D 27	5	62%	37
D 11	5	100%	60	D 28	4	100%	48
D 12	5	100%	60	D 29	5	97%	58
D 13	3	56%	20	D 30	4	50%	24
D 14	5	100%	60	D 31	3	67%	24
D 15	5	60%	36	D 32	4	75%	36
D 16	4	25%	12	D 33	6	68%	49
D 17	5	100%	60				

%	Quan
0%	1
1% to 10%	0
11% to 20%	1
21% to 30%	3
31% to 40%	1
41% to 50%	1
51% to 60%	3
61% to 70%	6
71% to 80%	3
81% to 90%	1
91% to 100%	12

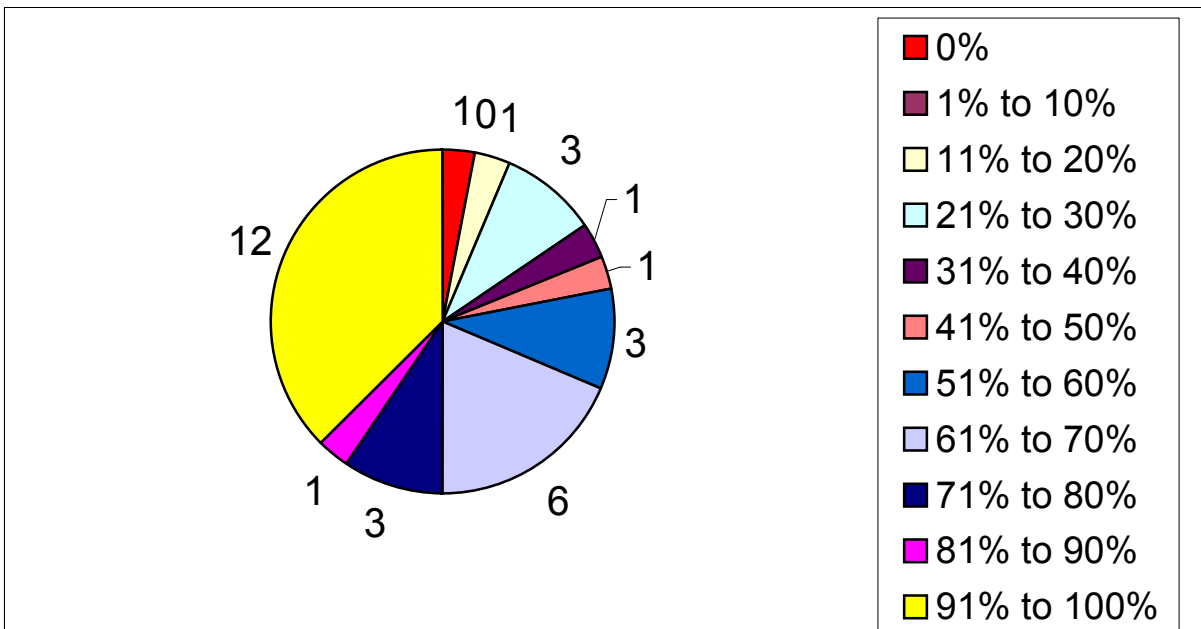
Total Districts 32

State percentage reported year to date:

71%

Baseline, Year to date:

0%



		M	A	M	J	J	A	S	O	N	D	J	F		
3 Councils	Council 1													0%	0%
	Council 2													0%	
	Council 3													0%	

		M	A	M	J	J	A	S	O	N	D	J	F		
4 Councils	Council 1													0%	0%
	Council 2													0%	
	Council 3													0%	
	Council 4													0%	

		M	A	M	J	J	A	S	O	N	D	J	F		
5 Councils	Council 1													0%	0%
	Council 2													0%	
	Council 3													0%	
	Council 4													0%	
	Council 5													0%	

		M	A	M	J	J	A	S	O	N	D	J	F		
6 Councils	Council 1													0%	0%
	Council 2													0%	
	Council 3													0%	
	Council 4													0%	
	Council 5													0%	
	Council 6													0%	

3 4 5 6
0% 0% 0% 0%

D1 5
D2 5
D3 5
D4
D5 5
D6 5
D7 5
D8 4
D9 5
D10 5
D11 5
D12 5
D13 3
D14 5
D15 5
D16 4
D17 5
D18 3
D19 3
D20 4
D21 4
D22 5
D23 5
D24 4
D25 6
D26 5
D27 5
D28 4
D29 5
D30 4
D31 3
D32 4
D33 6

Reports quantity by districts by Councils

Reports received			1249	of			1752													
D 1	1247	12	37	D 8	1534	12	36	D 15	2094	12	36	D 22	3559	12	36	D 28	5557	12	48	
	4280	12			2430	12			5626	12			3802	0			6261	12		
	4704	0			9760	12			5694	0			6381	12			6493	12		
	9278	1			10213	0			5878	12			7564	12			8338	12		
	10313	12			60	48			7336	0			60	10265			0	60		
D 2	5914	12	60	D 9	3165	12	12	D 16	3456	0	12	D 23	0		42	D 29	5970	12	58	
	8896	12			1731	0			5353	12			5549	0			6594	10		
	9859	12			4850	0			9761	0			5707	12			7436	12		
	10418	12			5248	0			10856	0			6169	12			8239	12		
	13214	12			60	60							9647	12			60	9713		12
D 3	5949	12	60	D 10	5249	0	17	D 17	1519	12	60	D 24	5117	12	48	D 30	5838	0	24	
	10401	12			5408	5			5543	12			5859	12			5946	0		
	10797	12			5858	0			8547	12			6068	12			6044	12		
	11307	12			6182	12			8655	12			6529	12			10174	12		
	12415	12			60	60			9949	12			60	48						48
D 4			0	D 11	2031	12	60	D 18	5219	0	0	D 25	5384	10	60	D 31	10029	12	24	
					5182	12			5788	0			8301	2			10239	0		
					5201	12			9757	0			8638	12			12943	12		36
					5320	12							9690	12						
					5965	12			60				12156	12						
D 5	2071	12	48	D 12	1886	12	60	D 19	5256	12	36	D 26	5104	12	60	D 32	3177	12	36	
	2513	0			5411	12			5259	12			9539	12			5968	12		
	2994	12			5850	12			5479	12			11888	12			7140	0		
	3360	12			6395	12							13129	12			60	7315		12
D 6	2725	12	24	D 13	4899	12	20	D 20	3183	12	33	D 27	1517	12	37	D 33	8215	12	49	
	3031	0			5238	8			5976	0			4938	10			8905	12		
	3142	0			6331	0			6755	9			8279	3			10580	0		
	5393	0							7497	12			48	9538			12	10587		12
D 7	4848	0	8	D 14	3920	12	60	D 21	5861	12	48	D 28	11936	0	60	D 33	11429	1	72	
	5735	0			5474	12			6132	12			8279	3			11775	12		
	6330	0			6588	12			7138	12										
	7139	0			6684	12			10316	12			48							
	8991	8			60	60														

237

265

225

283

239

Total 1249

Received to date

Total # of reports