

COUNCIL MONTHLY ACTIVITY REPORTING

Dates Received Tracking
2010 - 2011

		M A M J J A S O N D J F													
D 1	1247	T	T	T	L	T	T	T	T	T	T	T	T	92%	
	4280	T	T	T	T	T	T	T	T	T	T	T	T	92%	
	4704													0%	
	9278	T												8%	
	10313	T	T	T	T	T	T	T	T	T	T	T	T	100%	58.33%

		M A M J J A S O N D J F													
D 2	5914	T	T	C	T	T	T	T	T	T	T	L		92%	
	8896	T	T	T	L	L	L	L	T	T	T			92%	
	9859	T	T	T	C	L	T	T	T	T	T			92%	
	10418	T	T	T	T	T	T	T	T	T	T			92%	
	13214	T	T	T	T	L	T	L	T	L	L			92%	91.67%

		M A M J J A S O N D J F													
D 3	5949	T	T	T	C	T	T	T	T	T	T	T	T	100%	
	10401	T	T	L	T	T	T	T	T	T	T			92%	
	10797	T	T	L	L	T	T	T	T	T	T	T	T	100%	
	11307	T	T	L	T	L	T	T	T	T	T	T	T	100%	
	12415	T	T	T	T	T	T	L	L	T	T			92%	96.67%

		M A M J J A S O N D J F													
D 4														0%	
														0%	
														0%	
														0%	
														0%	0.00%

		M A M J J A S O N D J F													
D 5	2071	T	T	T	T	C	C	T	T	T	T	T	T	100%	
	2513													0%	
	2994	T	L	L	L	L	L	L	L	L	L	L	T	100%	
	3360	T	T	T	L	T	L	L	T	T	T			92%	
	3878													0%	58.33%

		M A M J J A S O N D J F													
D 6	2725	C	C	C	C	C	C	C	C	C	C	C	T	100%	
	3031													0%	
	3142													0%	
	5393													0%	
	8962	C	C	C	C	C	C	C	C	C	C	C	T	100%	40.00%

		M A M J J A S O N D J F													
D 7	4848													0%	
	5735													0%	
	6330													0%	
	7139													0%	
	8991	C	C	C	C	C	C	C	L					67%	13.33%

		M A M J J A S O N D J F													
D 8	1534	T	T	T	T	T	T	T	T	T	T	T	T	100%	
	2430													0%	
	9760	T	T	T	T	T	T	T	T	T	T	T	T	100%	
	10213													0%	50.00%

		M A M J J A S O N D J F													
D 9	3165	T	T	T	T	T	T	T	T	T	T	T	T	100%	
	1731													0%	
	4850													0%	
	5248													0%	
	10317													0%	25.00%

		M A M J J A S O N D J F													
D 10	5249													0%	
	5408	T	T						T	T	T			42%	
	5858													0%	
	6182	C	C	C	C	C	C	C	C	C	C	C	T	100%	
	6362													0%	28.33%

		M A M J J A S O N D J F													
D 11	2031	L	T	T	L	L	L	L	L	L	L	T	L	92%	
	5182	T	T	T	T	T	L	L	T	T	T	T	T	100%	
	5201													0%	
	5320	L	L	L	L	L	L	T	L	T	T	L	T	100%	
	5965													0%	58.33%

		M A M J J A S O N D J F													
D 12	1886	L	L	L	L	L	L	L	L	L	L	T	T	100%	
	5411	C	C	C	C	C	C	C	C	C	C	C	T	100%	
	5850													0%	
	6395	T	T	T	L	T	T	T	T	T	T	T	T	100%	
	8752	L	L	L	L	L	L	L	L	L	T	L	T	100%	80.00%

		M A M J J A S O N D J F													
D 13	4899	C	C	C	C	C	C	C	C	C	C	C	T	100%	
	5238	C	T	C	T	C	C	C	L					67%	
	6331													0%	55.56%

		M A M J J A S O N D J F													
D 14	3920	T	T	T	T	T	T	T	T	T	T	T	T	100%	
	5474	L	L	L	L	L	L	T	L	L	T			83%	
	6588	C	C	C	C	C	C	C	C	C	L			83%	
	6684	L	L	L	L	T	T	T	T	T	T			92%	
	7150	C	C	C	C	L								50%	81.67%

		M A M J J A S O N D J F													
D 15	2094	T	T	T	L	T	T	T	T	T	T	T	T	100%	
	5626	L	L	L	L	L	L	L	L	L	L	T	T	100%	
	5694													0%	
	5878	T	T	T	T	T	T	T	T	T	T	T	T	100%	
	7336													0%	60.00%

		M A M J J A S O N D J F													
D 16	3456													0%	
	5353	C	C	C	C	C	C	L	L	L	T	T	100%		
	9761													0%	
	10856													0%	25.00%

T	received on Time
L	received Late
C	Combined report

COUNCIL MONTHLY ACTIVITY REPORTING

Dates Received Tracking
2010 - 2011

		M A M J J A S O N D J F														
D 17	1519	T	T	T	T	T	T	T	T	T	T	T	T	T	100%	
	5543													T	50%	
	8547	T	T	T	T	T	T	T	T	T	T	T	T	T	100%	
	8655	T	T	T	T	T	T	T	T	T	T	T	T	T	100%	
	9949	T	T	T	T	T	T	T	T	T	T	T	T	T	100%	90.00%

		M A M J J A S O N D J F														
D 18	5219														0%	
	5788														0%	
	9757														0%	0.00%

		M A M J J A S O N D J F															
D 19	5256	L	T	T	C	C	C	C	C	T						75%	
	5259	L	L	L	L	L	L	L	T	T	T	T	T	T		100%	
	5479	C	C	C	C	C	C	L	T	T						83%	86.11%

		M A M J J A S O N D J F														
D 20	3183	T	T	T	T	L	L	L	L	L	L	T	T		100%	
	5976														0%	
	6755	T	T	T										T	58%	
	7497														0%	39.58%

		M A M J J A S O N D J F														
D 21	5861	T	T	T	T	T	T	T	T	T	T	T	L		92%	
	6132														0%	
	7138	T	T	L	T	L	T	L	T	L	T	L	T		100%	
	10316	C	C	C	C	C	C	C	C	C	C	C	T		100%	72.92%

		M A M J J A S O N D J F														
D 22	3559	C	C	C	C	C	C	C	C	C	C	C	T			
	3802															
	6381															
	7564															
	10265														0%	20.00%

		M A M J J A S O N D J F														
D 23	3575					L	L	L	L	T	T				50%	
	5549													0%		
	5707	T	T	T	T	T	T	T	T	T	T	L		92%		
	6169	L	L	L	T	L	T	L	T	L	T	T		92%		

		M A M J J A S O N D J F														
D 24	5117	C	C	C	C	C	C	C	C	C	C	C	T		100%	
	5859														0%	
	6068	T	T	T	L	L	L	L	T	T	L	T		92%		
	6529														0%	47.92%

		M A M J J A S O N D J F														
D 25	5384	T	L	L	L	L	L	L	L	L	L	L	L		83%	
	8301	T	T												17%	
	8638	C	C	C	C	C	C	C	C	C	C	C	T		100%	
	9690	T	T	T	L	L	L	T	T	T	T				92%	
	12156	L	L	L	L	L	L	L	L	L	L	T	T		100%	
	12740	T	T	L	T	L	L	L	L	L	T	T		100%	81.94%	

		M A M J J A S O N D J F														
D 26	5104	T	T	T	L	L	L	T	T	T	T	T	T		100%	
	9539	T	T	T	T	T	T	T	T	T	T	T	T		100%	
	9848	T	T	T	T	T	T	T	T	T	T	T	T		100%	
	11888	L	L	L	T	T	T	L	L						75%	
	13129	T	T	T	T	T	T	T	T	T	T	T	T		92%	93.33%

		M A M J J A S O N D J F													
D 27	1517	T	T	T	L	L	L	T	L	L	T	T		92%	
	4938					L	L	L	L	L				50%	
	8279	T	C	T										25%	
	9538	T	T	T	L	L	L	T	T	T	T	T		100%	
	11936														0%

		M A M J J A S O N D J F													
D 28	5557	T	T	T	L	L	T	L	L	L	L	T		92%	
	6261	C	C	C	C	C	C	C	C	C	C	T		100%	
	6493													0%	
	8338	L	L	L	L										33%

		M A M J J A S O N D J F														
D 29	5970	L	L	L	L	L	L	L	L	L	L	T	T		100%	
	6594	T	T	T	C	C	L	C	C	C	L			83%		
	7436	L	L	L	L	L	L	L	T	T	T	T		100%		
	8239														0%	
	9713	C	C	C	C	C	C	C	C	C	C	C	T		100%	76.67%

		M A M J J A S O N D J F														
D 30	5838														0%	
	5946														0%	
	6044														0%	
	10174														0%	0.00%

		M A M J J A S O N D J F														
D 31	10029	T	T	T	T										33%	
	10239														0%	
	12943	C	C	C	C	C	C	C	C	C	L	T		92%	41.67%	

		M A M J J A S O N D J F													
D 32	3177	L	L	L	L	L	L	L	L	L	L	T		92%	
	5968	C	C	C	C	C	C	C	C	C	C	T		100%	
	7140													0%	
	7315	L	L	L	L	L	L	L	L	L	L	T		100%	72.92%

		M A M J J A S O N D J F													
D 33	8215	T	C	C	C	C	C	C	C	C	C	T		100%	
	8905	T	T	T	L	T	T	T	T	T	T	T		100%	
	10580													0%	
	10587													0%	
	11429	T												8%	

T	received on Time
L	received Late
C	Combined report

To Feb Mar. 8
To Sept. 28/10

Monthly Evaluation: Program Reports: Saskatchewan State

District	Councils in District	%	Quantity Received	District	Councils in District	%	Quantity Received
D 1	5	58%	35	D 18	3	0%	0
D 2	5	92%	55	D 19	3	86%	31
D 3	5	97%	58	D 20	4	40%	19
D 4	Inactive			D 21	4	73%	35
D 5	5	58%	35	D 22	5	20%	12
D 6	5	40%	24	D 23	5	67%	40
D 7	5	13%	8	D 24	4	48%	23
D 8	4	50%	24	D 25	6	82%	59
D 9	5	25%	12	D 26	5	93%	56
D 10	5	28%	17	D 27	5	53%	32
D 11	5	58%	35	D 28	4	56%	27
D 12	5	80%	48	D 29	5	77%	46
D 13	3	56%	20	D 30	4	0%	0
D 14	5	82%	49	D 31	3	42%	15
D 15	5	60%	36	D 32	4	73%	35
D 16	4	25%	12	D 33	6	50%	36
D 17	5	90%	54				

%	Quan
0%	2
1% to 10%	0
11% to 20%	2
21% to 30%	3
31% to 40%	2
41% to 50%	4
51% to 60%	7
61% to 70%	1
71% to 80%	4
81% to 90%	4
91% to 100%	3

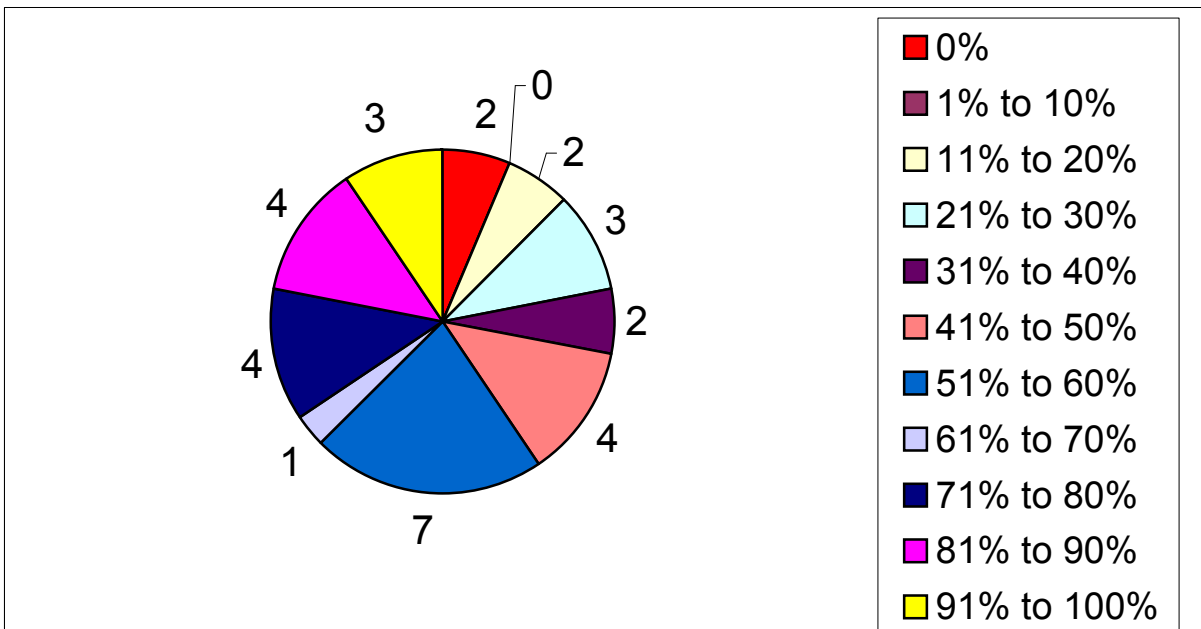
Total Districts 32

State percentage reported year to date:

52%

Baseline, Year to date:

0%



		M	A	M	J	J	A	S	O	N	D	J	F		
3 Councils	Council 1													0%	0%
	Council 2													0%	
	Council 3													0%	

		M	A	M	J	J	A	S	O	N	D	J	F		
4 Councils	Council 1													0%	0%
	Council 2													0%	
	Council 3													0%	
	Council 4													0%	

		M	A	M	J	J	A	S	O	N	D	J	F		
5 Councils	Council 1													0%	0%
	Council 2													0%	
	Council 3													0%	
	Council 4													0%	
	Council 5													0%	

		M	A	M	J	J	A	S	O	N	D	J	F		
6 Councils	Council 1													0%	0%
	Council 2													0%	
	Council 3													0%	
	Council 4													0%	
	Council 5													0%	
	Council 6													0%	

3 4 5 6
0% 0% 0% 0%

D1 5
D2 5
D3 5
D4
D5 5
D6 5
D7 5
D8 4
D9 5
D10 5
D11 5
D12 5
D13 3
D14 5
D15 5
D16 4
D17 5
D18 3
D19 3
D20 4
D21 4
D22 5
D23 5
D24 4
D25 6
D26 5
D27 5
D28 4
D29 5
D30 4
D31 3
D32 4
D33 6

Reports quantity by districts by Councils

Reports received			988	of			1752												
D 1	1247	11	35	D 8	1534	12	24	D 15	2094	12	36	D 22	3559	12	12	D 28	5557	11	27
	4280	11			2430	0			5626	12			3802	0			6261	12	
	4704	0			9760	12			5694	0			6381	0			6493	0	
	9278	1			10213	0			5878	12			7564	0			8338	4	
	10313	12			48	7336			0	60			10265	0			48		
D 2	5914	11	55	D 9	3165	12	12	D 16	3456	0	12	D 23	0		40	D 29	5970	12	46
	8896	11			1731	0			5353	12			3575	6			6594	10	
	9859	11			4850	0			9761	0			5549	0			7436	12	
	10418	11			5248	0			10856	0			5707	11			8239	0	
	13214	11			60	10317			0	48			6169	11			9713	12	
						9647	12	60											
D 3	5949	12	58	D 10	5249	0	17	D 17	1519	12	54	D 24	5117	12	23	D 30	5838	0	0
	10401	11			5408	5			5543	6			5859	0			5946	0	
	10797	12			5858	0			8547	12			6068	11			6044	0	
	11307	12			6182	12			8655	12			6529	0			10174	0	
	12415	11			60	6362			0	60							48		
D 4			0	D 11	2031	11	35	D 18	5219	0	0	D 25	5384	10	59	D 31	10029	4	15
			5182		12	5788			0	8301			2	10239			0		
			5201		0	9757			0	8638			12	12943			11		
			5320		12					9690			11						
			5965		0	36				12156			12						
D 5	2071	12	35	D 12	1886	12	48	D 19	5256	9	31	D 26	5104	12	56	D 32	3177	11	35
	2513	0			5411	12			5259	12			9539	12			5968	12	
	2994	12			5850	0			5479	10			9848	12			7140	0	
	3360	11			6395	12							11888	9			7315	12	
3878	0	60	8752	12	60		13129	11	72										
D 6	2725	12	24	D 13	4899	12	20	D 20	3183	12	19	D 27	1517	11	32	D 33	8215	12	36
	3031	0			5238	8			5976	0			4938	6			8905	12	
	3142	0			6331	0			6755	7			8279	3			10580	0	
	5393	0							7497	0			9538	12			10587	0	
8962	12	60					11936	0	60										
D 7	4848	0	8	D 14	3920	12	49	D 21	5861	11	35	D 28	1517	11	32	D 33	11429	1	72
	5735	0			5474	10			6132	0			4938	6			11775	11	
	6330	0			6588	10			7138	12			8279	3					
	7139	0			6684	11			10316	12			9538	12					
	8991	8			60	7150			6	48									

215

205

187

222

159

Total 988

Received to date

Total # of reports