

M A M J J A S O N D J F

D 19	5256													0%	25.00%
	5259	T	T	T	T	T								50%	
	5479	L	L	L										25%	

M A M J J A S O N D J F

D 21															20.83%
	5861	T	L	L	L	T	T							50%	
	6132													0%	
	7138	T	L	L	L									33%	
	9713													0%	

M A M J J A S O N D J F

D 23	1886	T	T	L	T									33%	13.10%
	5838													0%	
	5850													0%	
	5946													0%	
	6044													0%	
	6395	T	T	T	T	T	T	T						58%	
	8752													0%	

M A M J J A S O N D J F

D 25	5384													0%	16.67%
	8301													0%	
	8638													0%	
	9690	T	T	T	T	T	T	T						58%	
	12156													0%	
	12740	T	T	T	T	T								42%	

M A M J J A S O N D J F

D 27	1517	T	T	T	L	L	L							50%	31.67%
	4938													0%	
	8279			T		T	T	T						33%	
	9538	T	T	T	T	T	T	T						58%	
	11936	L	T											17%	

M A M J J A S O N D J F

D 29	3575	T	T	T	T	T	T							58%	43.33%
	5549													0%	
	5707	T	T	T	T	T	L	T						58%	
	6169	T	T	T	T	T	T	T						58%	
	9647	L	L	L	T	T								42%	

M A M J J A S O N D J F

D 20	3183	T	T	T	T	L	L	T						58%	21.67%
	5976													0%	
	6755	T	T	T	T	T	L							50%	
	7497													0%	

M A M J J A S O N D J F

D 22	3177													0%	6.25%
	5968													0%	
	7140													0%	
	7315	L	L	L										25%	

M A M J J A S O N D J F

D 24	5859													0%	0.00%
	6068													0%	
	6529													0%	

M A M J J A S O N D J F

D 26	5104	T	T	T	T	L								50%	45.00%
	9539	T	T	T	T	T								50%	
	9848				T									8%	
	11888	C	L	L	T	T	T	T						58%	
	13129	T	T	T	T	T	T	T						58%	

M A M J J A S O N D J F

D 28	8215													0%	23.61%
	8905	T	T	T	T	T	T							58%	
	10580													0%	
	10587	L	T	T	T	T	T							50%	
	11429													0%	
	11775	T	T	T	T									33%	

M A M J J A S O N D J F

T received on Time
 L received Late
 C Combined report

Year

Til

Monthly Evaluation: Program Reports: Saskatchewan State

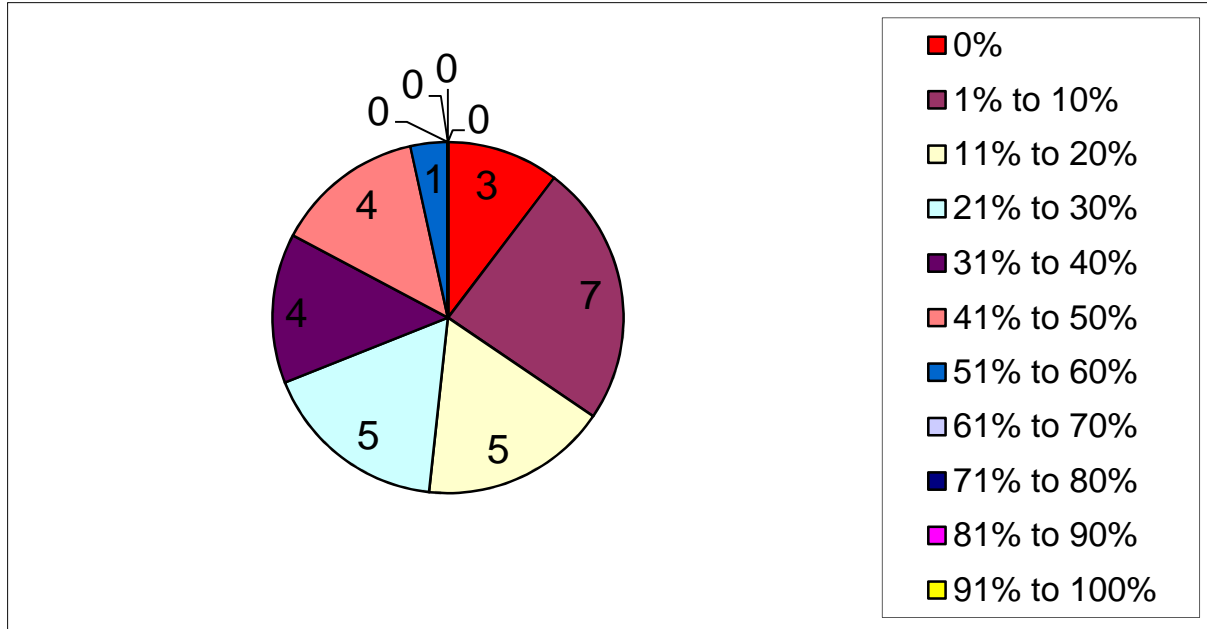
District	Councils in District	%	Quantity Received	District	Councils in District	%	Quantity Received
D 1	5	37%	22	D 18	4	0%	9
D 2	5	50%	30	D 19	3	25%	9
D 3	6	49%	35	D 20	5	22%	13
D 4	6	24%	16	D 21	4	21%	10
D 5	5	10%	6	D 22	4	6%	3
D 6	6	1%	0	D 23	7	13%	11
D 7	4	38%	18	D 24	3	0%	0
D 8	5	5%	3	D 25	6	17%	12
D 9	7	7%	6	D 26	5	45%	27
D 10	5	2%	1	D 27	5	32%	19
D 11	5	17%	10	D 28	6	24%	13
D 12	5	2%	1	D 29	5	43%	26
D 13	3	0%	0				
D 14	5	32%	19				
D 15	5	30%	18				
D 16	4	13%	6				
D 17	5	52%	31				

%	Quan
0%	3
1% to 10%	7
11% to 20%	5
21% to 30%	5
31% to 40%	4
41% to 50%	4
51% to 60%	1
61% to 70%	0
71% to 80%	0
81% to 90%	0
91% to 100%	0

Total Districts 29

State percentage reported year to date:
19%

Baseline, Year to date:
0%



		M	A	M	J	J	A	S	O	N	D	J	F		
3 Councils	Council 1													0%	0%
	Council 2													0%	
	Council 3													0%	

		M	A	M	J	J	A	S	O	N	D	J	F		
4 Councils	Council 1													0%	0%
	Council 2													0%	
	Council 3													0%	
	Council 4													0%	

		M	A	M	J	J	A	S	O	N	D	J	F		
5 Councils	Council 1													0%	0%
	Council 2													0%	
	Council 3													0%	
	Council 4													0%	
	Council 5													0%	

		M	A	M	J	J	A	S	O	N	D	J	F		
6 Councils	Council 1													0%	0%
	Council 2													0%	
	Council 3													0%	
	Council 4													0%	
	Council 5													0%	
	Council 6													0%	

3 4 5 6
0% 0% 0% 0%

D1 5
D2 5
D3 6
D4 6
D5 5
D6 6
D7 4
D8 5
D9 7
D10 5
D11 5
D12 5
D13 3
D14 5
D15 5
D16 4
D17 5
D18 4
D19 3
D20 5
D21 4
D22 4
D23 7
D24 3
D25 6
D26 5
D27 5
D28 6
D29 5
D30 0
D31 0
D32 0
D33 0

Reports quantity by districts by Councils

Reports received			374	of	1644		
D 1	1247	7	22	D 8	3559	3	60
	4280	7			3802	0	
	4704	0			6381	0	
	9278	1			7564	0	
	10313	7			10265	0	
D 2	5914	4	30	D 9	1731	0	84
	8896	7			3161	0	
	9859	7			3165	6	
	10418	6			4850	0	
	13214	6			5248	0	
				10317	0		
				10400	0		
D 3	5949	7	35	D 10	5249	0	60
	6493	0			5408	0	
	10401	7			5858	0	
	10797	7			6182	1	
	11307	7			6362	0	
D 4	1534	0	16	D 11	2031	0	60
	2513	2			5182	5	
	2994	0			5201	0	
	3360	0			5320	5	
	9760	7			5965	0	
10213	7						
D 5	2071	6	6	D 12	5970	1	60
	2725	0			6594	0	
	3142	0			7436	0	
	5393	0			8239	0	
	3878	0			8338	0	
D 6	3031	0	0	D 13	4899	0	36
	3031	0			5238	0	
	5735	0			6331	0	
	6330	0					
	7139	0					
8962	0						
D 7	3031	0	0	D 14	4899	0	36
	3031	0			5238	0	
	5735	0			6331	0	
	6330	0					
	7139	0					
8962	0						
D 8	3559	3	3	D 15	2094	7	60
	3802	0			5626	4	
	6381	0			5694	0	
	7564	0			5878	7	
	10265	0			7336	0	
D 9	1731	0	6	D 16	3456	0	48
	3161	0			5353	6	
	3165	6			9761	0	
	4850	0			10856	0	
	5248	0					
10317	0						
10400	0						
D 10	5249	0	1	D 17	1519	3	60
	5408	0			5543	7	
	5858	0			8547	7	
	6182	1			8655	7	
	6362	0			9949	7	
D 11	2031	0	10	D 18	5219	0	48
	5182	5			5788	0	
	5201	0			9757	0	
	5320	5			10174	0	
	5965	0					
D 12	5970	1	1	D 19	5256	0	36
	6594	0			5259	6	
	7436	0			5479	3	
	8239	0					
	8338	0					
D 13	4899	0	0	D 20	3183	7	60
	5238	0			5976	0	
	6331	0			6755	6	
					7497	0	
D 14	4899	0	0	D 21	5861	6	36
	5238	0					
	6331	0					
D 15	2094	7	18	D 22	3177	0	60
	5626	4			5968	0	
	5694	0			7140	0	
	5878	7			7315	3	
	7336	0					
D 16	3456	0	6	D 23	1886	4	48
	5353	6			5838	0	
	9761	0			5850	0	
	10856	0			5946	0	
					6044	0	
		6395	7				
		8752	0				
D 17	1519	3	31	D 24	5859	0	60
	5543	7			6068	0	
	8547	7			6529	0	
	8655	7					
	9949	7					
D 18	5219	0	9	D 25	5384	0	36
	5788	0			8301	0	
	9757	0			8638	0	
	10174	0			9690	7	
					12156	0	
		12740	5				
D 19	5256	0	9	D 26	5104	6	36
	5259	6			9539	6	
	5479	3			9848	1	
					11888	7	
					13129	7	
D 20	3183	7	13	D 27	1517	6	60
	5976	0			4938	0	
	6755	6					
	7497	0					
D 21	5861	6	0	D 28	8215	0	60
					8905	7	
					10580	0	
					10587	6	
					11429	0	
		11775	4				
D 22	3177	0	3	D 29	3575	7	60
	5968	0			5549	0	
	7140	0			5707	7	
	7315	3			6169	7	
					9647	5	
D 23	1886	4	11	D 30	5859	0	48
	5838	0			6068	0	
	5850	0			6529	0	
	5946	0					
	6044	0					
6395	7						
8752	0						
D 24	5859	0	0	D 31	5859	0	36
	6068	0			6068	0	
	6529	0			6529	0	
D 25	5384	0	12	D 32	5384	0	60
	8301	0			8301	0	
	8638	0			8638	0	
	9690	7			9690	7	
	12156	0			12156	0	
12740	5						
D 26	5104	6	27	D 33	5104	6	60
	9539	6			9539	6	
	9848	1			9848	1	
	11888	7			11888	7	
	13129	7			13129	7	
D 27	1517	6	0	D 34	1517	6	60
	4938	0			4938	0	
D 28	8215	0	13	D 35	8215	0	60
	8905	7			8905	7	
	10580	0			10580	0	
	10587	6			10587	6	
	11429	0			11429	0	
11775	4						
D 29	3575	7	26	D 36	3575	7	60
	5549	0			5549	0	
	5707	7			5707	7	
	6169	7			6169	7	
	9647	5			9647	5	
D 30	5859	0	0	D 37	5859	0	48
	6068	0			6068	0	
	6529	0			6529	0	

